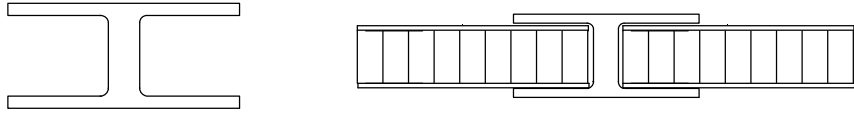


**ALL EXTRUSIONS ARE 6063-T6.
 AVAILABLE ANODIZED.
 SOME SHAPES AVAILABLE IN
 STAINLESS STEEL.**

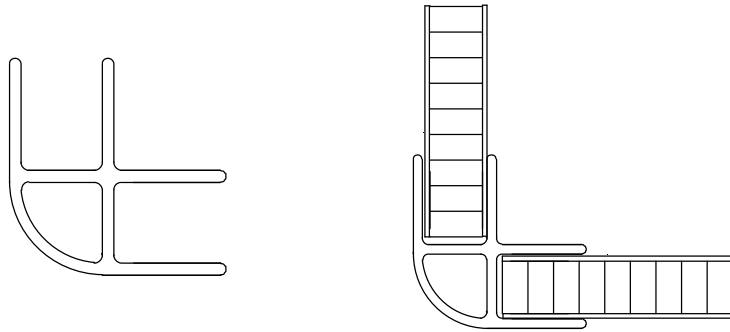
SPXD-1004-1008
 H-POST
 .616 # / Ft
 5/8" (15.88 mm) PANELS



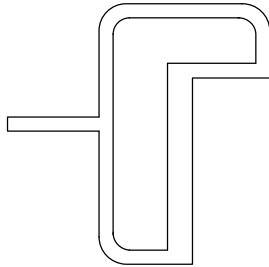
SPXD-1004-1014A
 .328 # / Ft
 CHANNEL
 5/8" (15.88 mm) PANELS



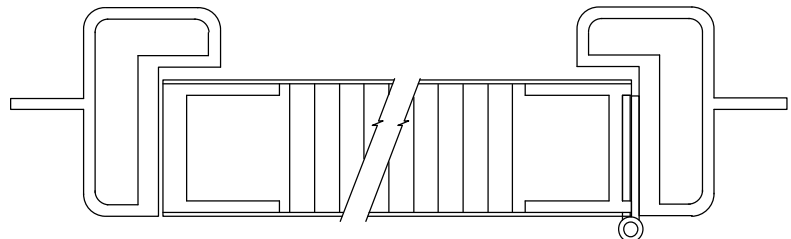
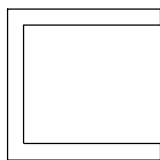
SPXD-1004-1007
 .716 # / Ft
 CORNER POST
 5/8" (15.88 mm) PANELS



DOOR, OUTER FRAME
 FOR 1 3/8" DOORS



DOOR, LOCK SIDE
 INNER FRAME
 FOR 1 3/8" DOORS



DOOR, HINGE SIDE
 INNER FRAME
 FOR 1 3/8" DOORS

